

TWX-2200 Modern Cell Tower Instruction Manual

Tools needed for assembly

- Sharp X-Acto Knife
- 220 grit sandpaper
- Tite Bond II® Wood Glue
- Super Glue & Accelerator
- Masking Tape (or small squeeze clamps)

Remove parts from the sprue using a sharp X-Acto knife to cut the sprues that hold the parts in the frets. Carefully sand the sprues even with the sides of the part, creating a smooth surface that will mate well with the other part.

Assembly

Step 1; Begin by assembling the electrical building. Remove parts A2, A3, A4, A5 use wood glue or super glue to assemble as shown below in photo 1.

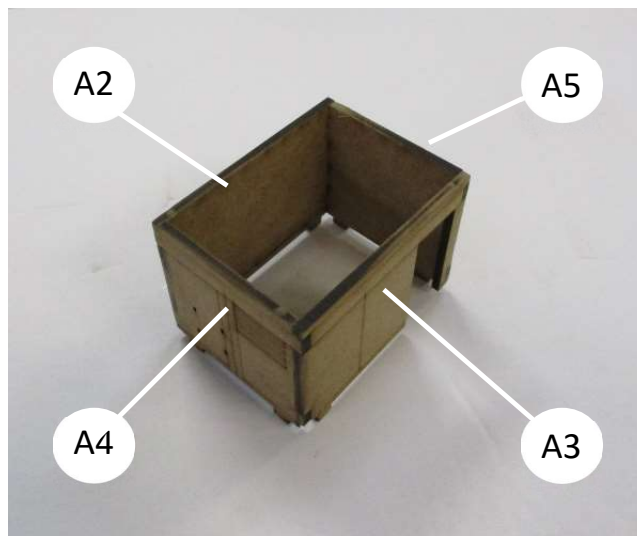
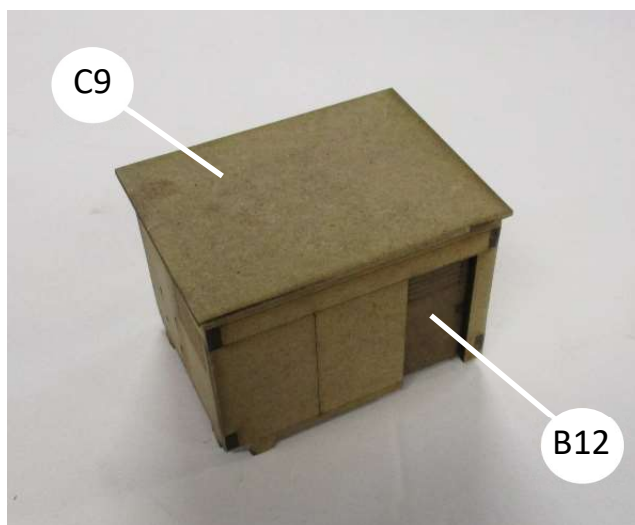


Photo 1

Step2; Remove the electrical building roof (C9) and door (B12). Glue the door and roof on as shown in photo 2.



Step 3; Assemble the wire routing rack using parts B2, B3, B4, B5 and B6. Remove all these parts and assemble them using super glue and accelerator as shown in photo 3 and 4 below.

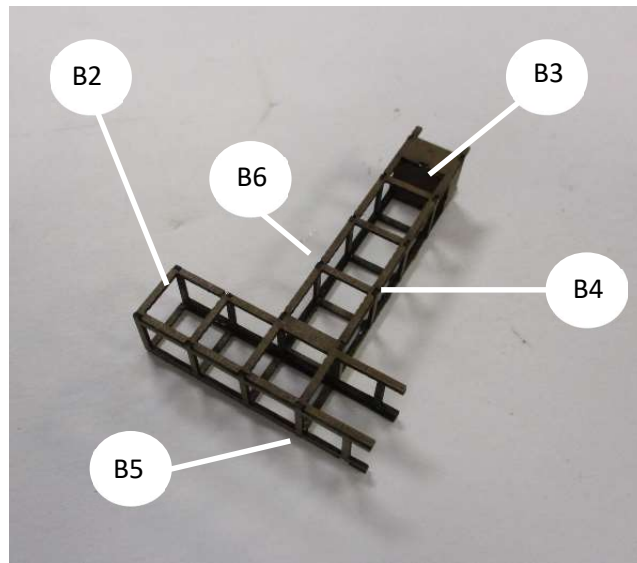


Photo 3

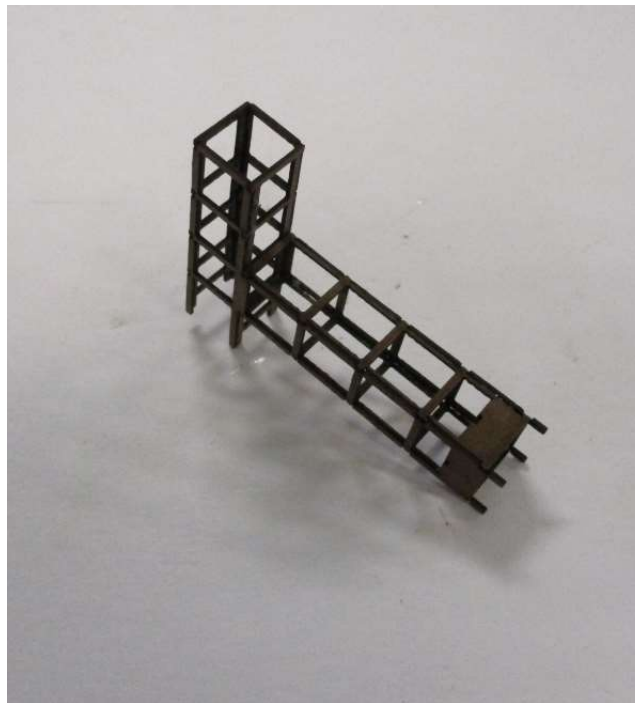


Photo 4

Step 4; Assemble two cell panel platforms using parts B7 (8 pcs per platform) and B8 (1pc per platform). Use super glue and accelerator to glue the railings to the platform as shown in photo 5.

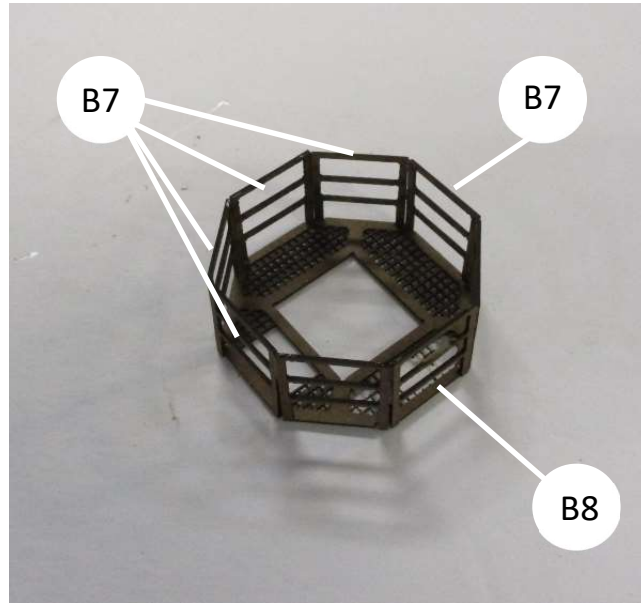


Photo 5

Step 5; Assemble the cell panels using parts B9 (25pcs), B10 (5pcs) and B11 (30pcs). Use super glue and accelerator to glue these pieces together as shown in photo 6 below.

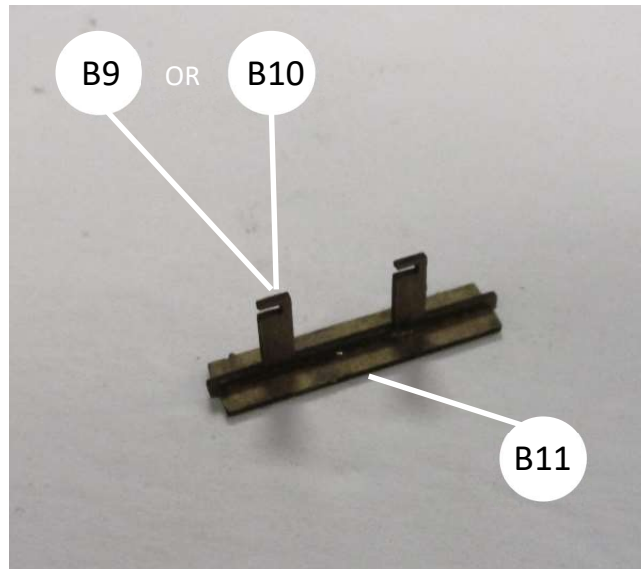


Photo 6

Step 6; Assemble the top tower using parts C5, C6, C7 and C8. Use wood glue to assemble this tower, the tabs insert into the notches to create a secure joint. Use masking tape to hold the assembly together until it dries completely. Refer to photos 7 and 8 below.

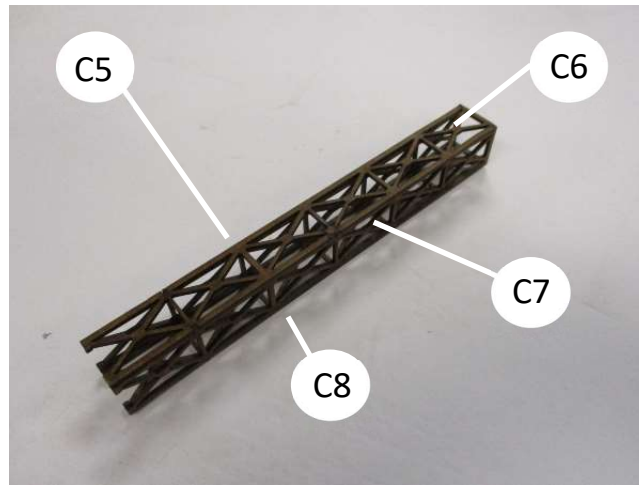


Photo 7



Photo 8

Step 7; Assemble the bottom tower using parts C1, C2, C3 and C4. Use wood glue to assemble two halves of the tower together. (glue C1 and C2 together, applying wood glue to the edge and clamp the halves together. It is useful to use a couple dabs of super glue and accelerator behind the fishplates to help keep the assembly secure while the wood glue is drying. Refer to photos 9 and 10 below.

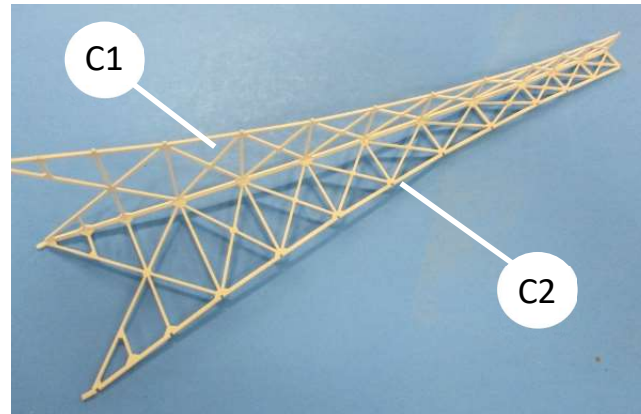


Photo 9

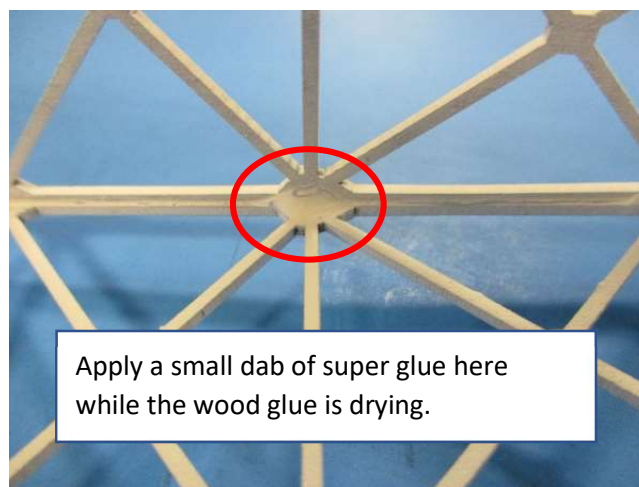


Photo 10

NOTE: If you are painting the tower like our display model it is MUCH easier to paint the lower tower while it is in two halves. Paint the two halves white (as the photos show). Then mask the white areas, paint the red areas then assemble the two halves. Otherwise, masking the assembled tower will be extremely difficult!

Step 8; Glue the two tower base halves together using wood glue, using super glue behind the fish plates as shown in photo 10.

Step 9; Glue the cell panels to the platform railings using super glue. There are 25 cell panel brackets (B9) that attach to the platform railings, as shown in photo 11 on the next page.

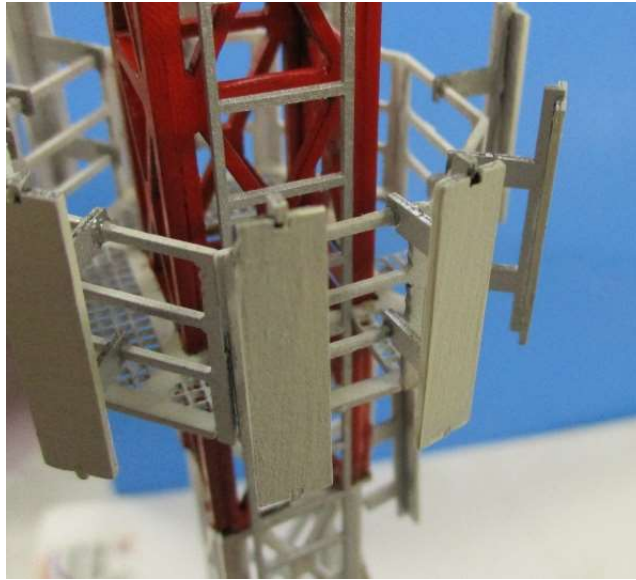


Photo 11

Parts B10 are designed to mount to the tower itself (the slots are slightly larger to drop over the tower material). Attach the larger slotted cell panel to the tower wherever you please.

Step 10; Once the cell panels have been attached to the platform railings you can mount the platforms to the tower. Carefully slide the platforms down from the top and glue them in place using super glue. Refer to photo 12 on the next page.

NOTE: Make sure you align the openings for the ladder on the same side of the tower! The ladder runs through these openings.



Photo 12

Step 11; Remove the two ladders from the fret (B1). These ladders attach to the side of the tower, routing through the openings in the platform. Use super glue to attach the ladder to the side of the tower and center the ladder on the wider base of the lower tower structure.

Step 12; Remove the tower base from the fret (A1). Paint the base accordingly and place the electrical cabinet in the slots provided. The wire routing rack mounts to the side of the electrical cabinet and routes underneath the tower. The tower inserts into the holes provided in the base. Refer to photo 13 on the next page.



Photo 13

The assembly is now complete. A photo of the completed model is shown on the next page.



Completed Model

To add some extra detail to your modern cell tower add our TWX-2120 Chain Link Fence kit! Here are a couple shots with the chain link fence.



TW TrainWorx
2808 McGowan St
Dallas, TX 75203
214-634-2965

www.twtrainworxstore.com