



TWX-2090 Scale House & Weigh Scale Assembly Instructions

Tools required for assembly:

Sharp hobby knife

220 grit sandpaper

Cyanoacrylate accelerator (super glue kicker)

Masking tape

Tite Bond II Wood Glue (or similar)

Medium viscosity super glue

6-8 small squeeze clamps

Small square

Removing parts from the fret; Each part is held into the fret with very small sprues. Use a hobby knife to cut these sprues to prevent breaking parts when removing them from the fret. Carefully sand the sprues off each part using 220 grit sandpaper. Use masking tape to hold the walls together while the glue dries

- 1.) Remove parts A1 and A3 from the fret. Glue these two parts together as shown in photo 1 using wood glue. Use masking tape to hold the walls together while the glue sets up.



Photo 1

- 2.) Remove parts A4 and A7 from the fret. Glue these two parts together as shown in photo 2 using wood glue. Use masking tape to hold the walls together while the glue sets up.



photo 2

- 3.) Remove parts A2, A5 and A6 from the fret. Glue these three dormer walls together as shown in photo 3 using wood glue.



Photo 3

- 4.) Using wood glue, glue the two main building halves together as shown in photo 4.

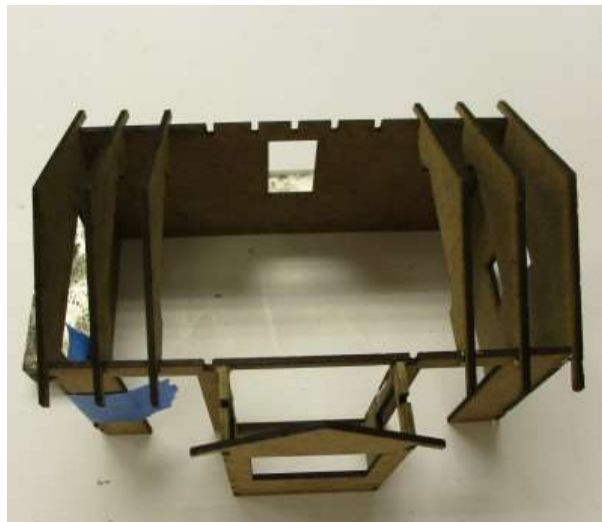


Photo 4

- 5.) Glue the dormer wall (parts A2, A5 and A6) to the front wall (A1) as shown in photo 4 above, using wood glue.
- 6.) Remove trusses A8 from the fret. Using wood glue, apply a small dab of glue in the notches on each outside wall. Insert the trusses into these notches as shown in photo 5.

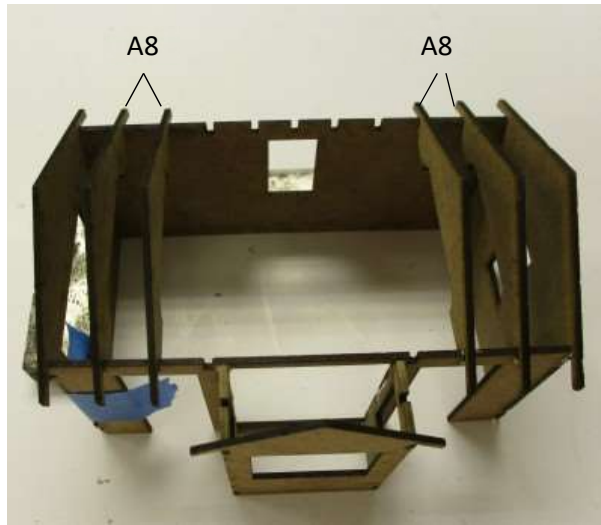


Photo 5

- 7.) Remove parts A12 and A13 from the fret. Using wood glue, glue part A13 in between trusses A12. (NOTE: there are engraved lines on the two A12 trusses, these lines should face away from the dormer wall on the front of the building.) Glue part A13 in between trusses A12 (with the engraved line facing part A13. See photo 6a and 6b below for clarity.

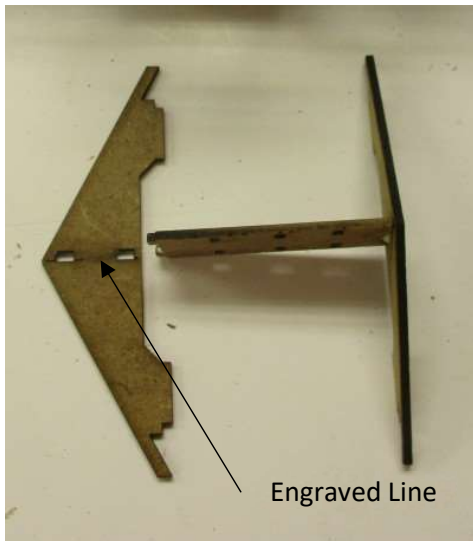


Photo 6a

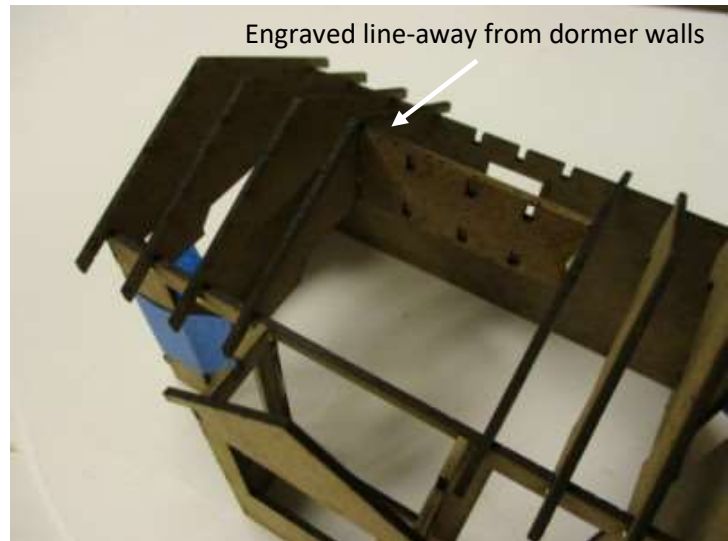


Photo 6b

- 8.) Apply four small dabs of wood glue to the remaining 4 notches on the large structure wall and position trusses A12 as shown above. Again, ensure the engraved lines in the A12 trusses face away from the dormer walls. (Photo 7).

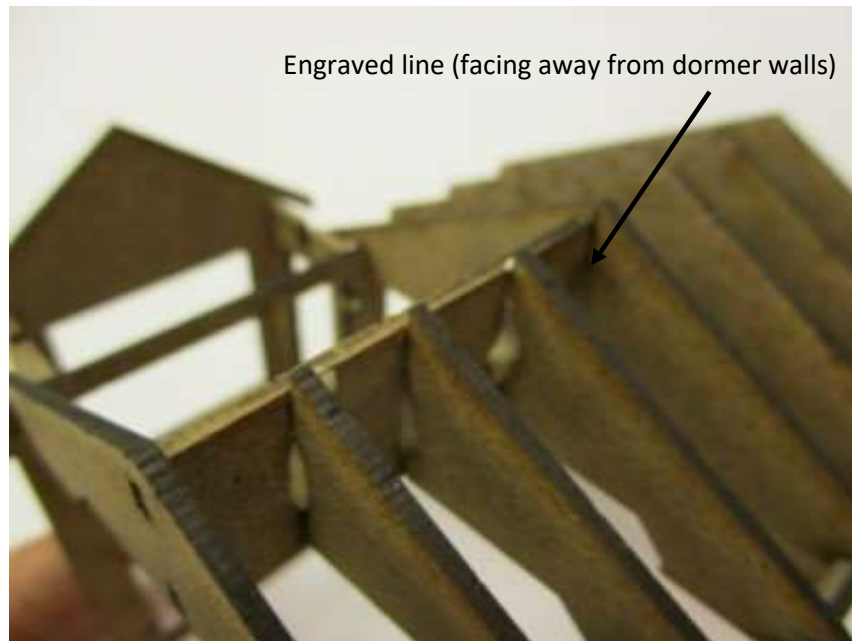


Photo 7

9.) Remove trusses A14 from the fret and install as shown above in photo 7 using wood glue.

10.) Remove part A9 from the fret and glue in place as shown below in photo 8.

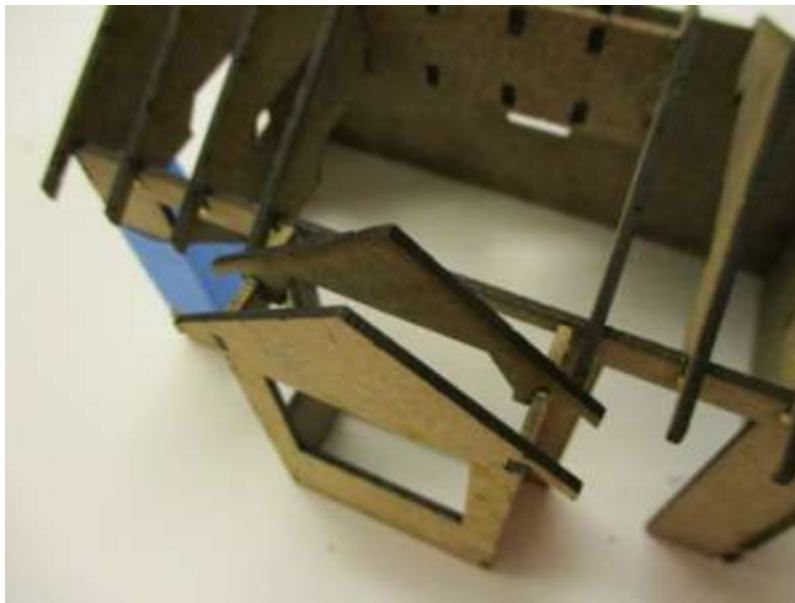


Photo 8

11.) Remove parts B7 from the B sheet. The roof section with the engraved lines installs on the dormer side of the building. Remove the white protective film from the back side of the roof sections to expose the adhesive surface. Carefully position the front roof panel (with the engraved lines) on top of the trusses, being careful to center the roof on the structure. (Photo 9).



Photo 9

- 12.) Remove the protective film on the rear roof panel and position on top of the trusses, being careful to align the ends with the front roof and ensure the peak is even across the entire length of the roof (photo 10).



Photo 10

- 13.) Remove both pieces of B8 from the fret. Remove the white protective film from the back side of each dormer roof. Position the dormer on top of the dormer trusses as shown in photos 11a and 11b.

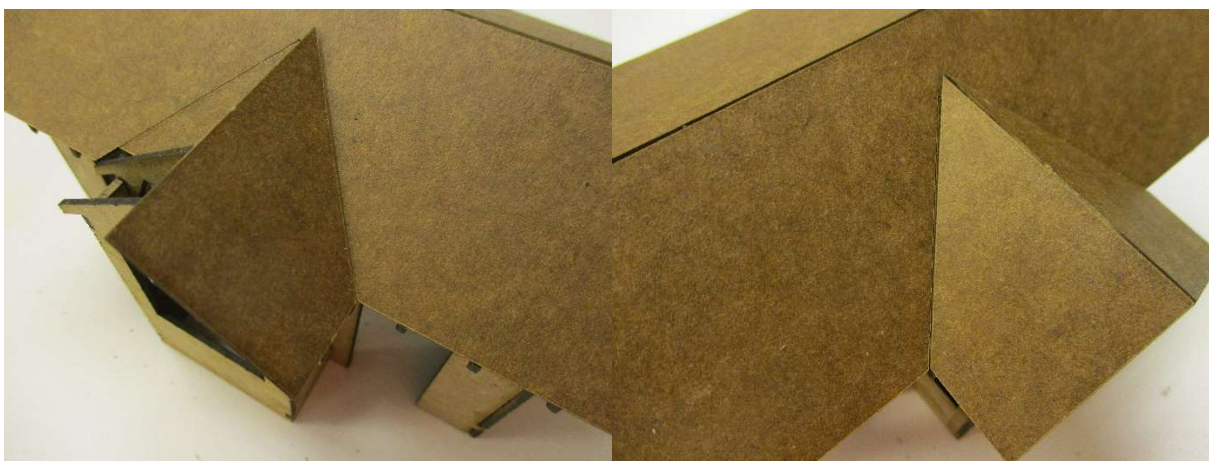


Photo 11a

Photo 11b

14.) Apply a very small dab of medium viscosity super glue between the point on the dormer roof and the front main building roof to prevent the front wall from curling inward. Use the accelerator to quickly cure the glue (photo 12).



Photo 12

15.) Remove part A11 from the fret and apply it to the edge of the dormer roof. The flying truss should be even with the edge of the roof. (photo 13)



Photo 13

- 16.) Remove parts A10 from the fret and install one on each end of the main building roof as shown in photo 14 below.



Photo 14

- 17.) Locate the standing seam metal roof pieces in the separate plastic bag. Using medium viscosity super glue, apply 3 liberal beads of super glue to the front main roof. Place the standing seam metal roof on top of the hardboard surface and spray the edges with the accelerator to immediately cure the super glue. Repeat this step for the rear roof. NOTE: both rooves are cut so the standing seams match along the ridge line. (Photo 15a and 15b).

Use a little filler putty to smooth out the interlocking tabs on the 6 corners of the building. Use the 220 grit sandpaper to smooth the filler putty, to create a smooth joint between the walls.

NOTE: Now is the ideal time to paint the structure a concrete color (before applying the metal roof). This is also a good time to apply the base color onto the metal roof (aluminum, silver, etc.)



Photo 15a



Photo 15b

- 18.) Using the medium viscosity super glue, apply a couple liberal beads on the dormer roof and install the two dormer roofs. It may be necessary to lightly trim the roof panels. We recommend you test fit them before gluing them permanently in place. (Photo 16)

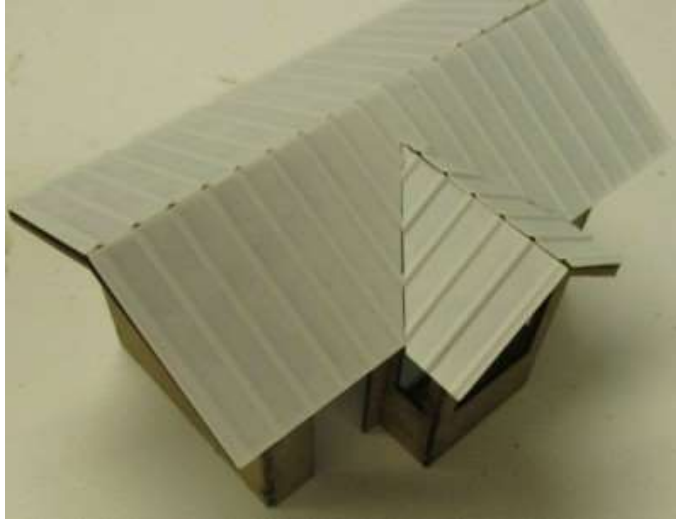


Photo 16

- 19.) Locate the ridge caps from the plastic bag. Each ridge cap has a fine line engraved down the center of it. Very carefully bend this ridge cap along that engraved line to create a V shaped cap. Using medium viscosity super glue place this ridge cap along the ridge of both roofs. Use the accelerator to cure the super glue. NOTE: you will need to cut the angle in the short ridge cap where it meets the main roof. (Photo 17)



Photo 17

- 20.) Remove parts B5 and B6 from the B sheet fret. B6 is the recessed panel for the entry doors. Remove the white protective film from the back side of B5. Place B6 onto the back side of B5 as shown in photos 18 below. (Do not remove the protective film from the back side of part B6!)

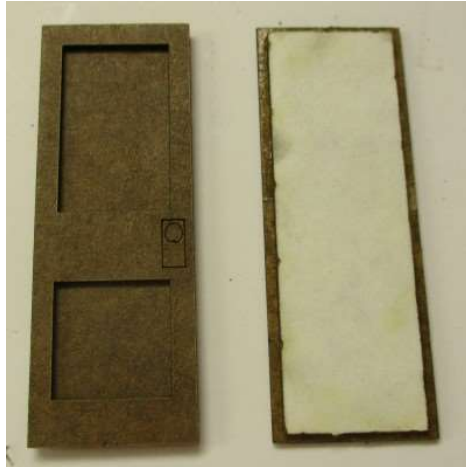


Photo 18

21.) Remove parts B1, B2, B3 and B4 from the B sheet fret. These windows attach to the building using the self adhesive tape on the back of each part. Remove the white protective film to expose the adhesive tape. Position the window over its respective opening and press firmly in place. For the door frame, you can position the door closed or open using just the adhesive tape as shown in photo 19a, 19b, 19c and 19d below.



Photo 19a



Photo 19b



Photo 19c



Photo 19d

22.) Locate the frosted window film from the plastic bag. These windows fit precisely inside each window opening and are held in place with the self-adhesive tape on the back side of each window. NOTE: it is best to attach the non-frosted side of the window to the adhesive on the back side of the windows. (Photo 20)



Photo 20

23.) Finally locate the scale and the scale frame (part D1 from the D fret). The scale itself has a very fine space between the frame. When mounting the scale inside the frame, be sure to provide an equal amount of space around the scale plate itself. The photo below shows the intended layout of the items. (Photo 21)



Photo 21

2808 McGowan St, Dallas TX 75203

214-634-2965

<https://blog.traindame.com>

www.twtrainworxstore.com